

Through workshops, small and large public murals, and an unprecedented intergenerational regeneration scheme, Signal has contributed to delivering tangible local authority outcomes across a whole county.

Signal has built up a broad portfolio of over 26 projects delivered across

Surrey County Council since 2004 working with diverse groups across the community. The projects include numerous one-off graffiti workshops at youth clubs, large public murals and longer term activities that gain participants GCSE equivalent qualifications.

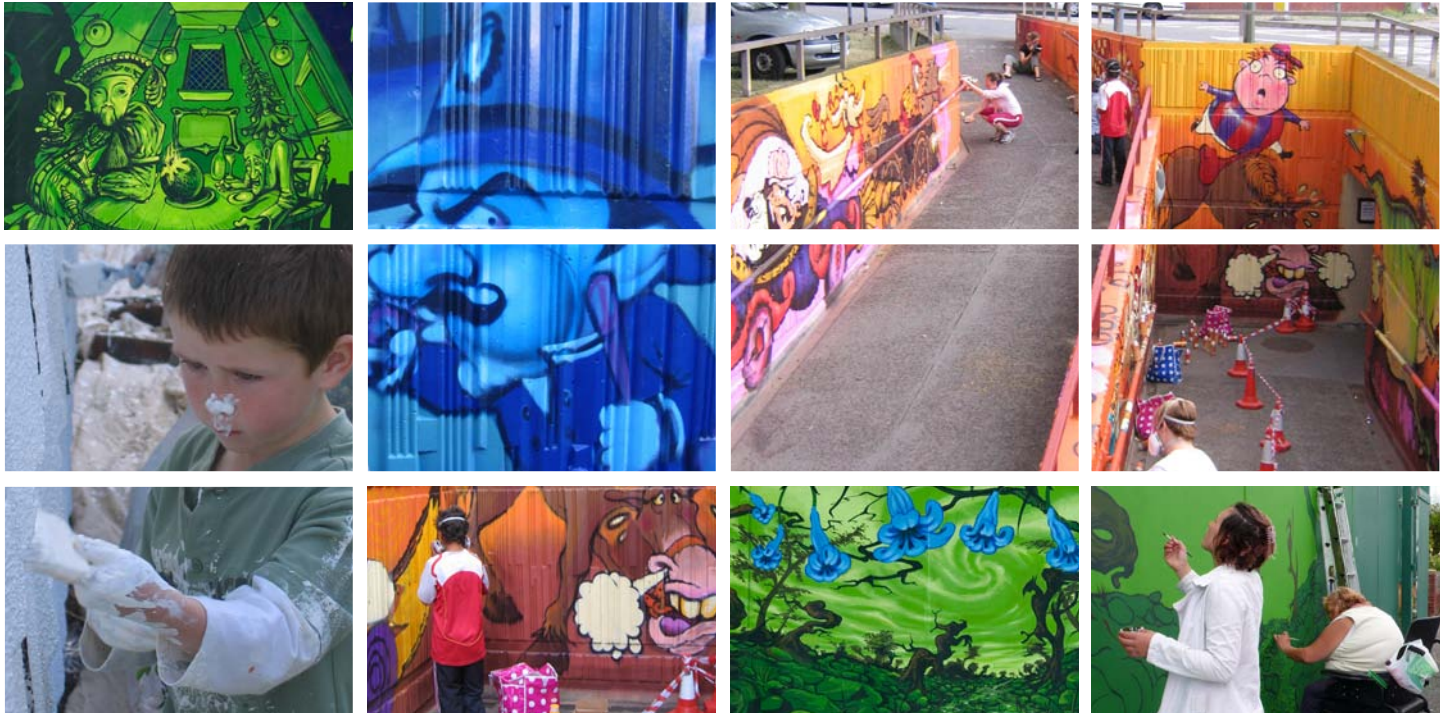
"I am writing to say how wonderful it is to work with Signal Project Limited. The work that you carried out with the council on the Sunbury Cross project as part of the Cultural Pathfinder was excellent. The Council received national recognition

for this work and it also helped support young people. I do know that one or two people went on to college to study Graphic Design. The project attracted nearly £500,00 in external funds and has certainly improved this area.

I must also say how wonderful the project in Stanwell has been. It has brought communities together and the art work is outstanding. Spelthorne Borough Council looks forward to working with you in the future."

Liz Borthwick, Assistant Chief Executive
Spelthorne Borough Council

SIGNAL



Commissioned through various council departments, our work is designed to integrate and meet the Local Area Agreement objectives of multiple agencies working in partnership across the borough.

As a result, our larger projects have been instrumental in securing investment for the area significantly above the Council's initial outlay. Our work has proved particularly relevant in these areas: Children and Young People, Safer and Stronger Communities, and Housing, Infrastructure and Environment.

We have worked with and/or been funded by:

- Multi Agency Partnerships
- Highway and Street Maintenance
- Fear of Crime Initiatives

- Initiatives to Engage Disaffected and Vulnerable Young People
- Local Regeneration Schemes
- Secondary Education Accreditation
- Local Education Authority Initiatives
- Youth Development Services
- Environmental Planning Services
- Arts and Cultural Events
- Youth Justice Services
- Intergenerational Engagement
- Engagement Initiatives for People with Learning Difficulties

Signal's working relationship across Surrey has continued to improve and develop over the years, with projects becoming more ambitious and more expansive. The recently completed Stanwell Project involved 900 members of the local community, and the Tongham Subway Mural was an opportunity for 16 young people to fast track through a BTEC Visual Arts equivalent to one GCSE.

"Since we started working in Stanwell the area has attracted a great deal of interest from other organisations and agencies, which has triggered a funding programme in excess of £250,000. ...it was the work the Signal Project team did in the community that highlighted the area's need and many of the issues. I am delighted to report the funding has been directed across all age groups, which is testament to the intergenerational approach of the project."

Mandie Wilde, Project Coordinator
A2Dominion Group

"I have worked with Signal Project on four separate murals... the artists from Signal Project have been fantastic at engaging the young people in the whole process... The young people come away feeling excited about the new skills they have learnt."

Gareth Palmer, Youth Development Worker (Arts) Surrey Youth Service